



Little Stoke Primary School

September 2025

Key Dates:

Monday 22nd September 2025: 5 ways to well-being assembly; facilitated by Daria (EMHP).

Tuesday 23rd September 2025 9 – 10am: Parent workshop – 5 ways to well-being; facilitated by Daria (EMHP).

Friday 26th September 2025: European languages day

Monday 20th October 2025: Individual Pupil Photos

Wednesday 22nd October 2025 3:30 – 5:30pm: Parents' evening (booking will be through Arbor, details to follow)

Thursday 23rd October 2025 4 – 7pm: Parents' evening (booking will be through Arbor, details to follow)

Tuesday 21st October 2025: Harvest Assembly (we will be collecting donations for Trussell Trust again this year)
KS1 9:15am
KS2 10am

Thursday 23rd October 2025: last day of term 1

Friday 24th October 2025: INSET day -school closed to pupils

Monday 3rd November: Start of term 2

Dear Parents and Carers,

Welcome back to term 1. A very warm welcome to our new families who have started with us in 2025. We have had a great start to term 1 with some great improvements to the school building (see more information below).

School Uniform Reminders:

School uniform is compulsory and important that Parent and Carers support their child and the school by sending children into school with the correct school uniform. The overwhelming majority of children returned to school in full school uniform looking smart and ready for learning – thank you to parents and carers for helping the year start so well.

A reminder that school shoes should be all black. For PE the children should wear black trainers.

Jewellery and hair:

Unless the school has been informed that it is for religious reasons, for health and safety jewellery should not be worn in school. Also, for the safety of the children, please ensure that only stud earrings are worn.

For hygiene and safety reasons, we request that long hair (shoulder length or longer) is tied back in school. All long hair **MUST** be tied back for PE.

The school uniform policy can be found on the policies section of the school website:

<https://littlestokeps.co.uk/parentscarers/policies/>

If your child has forest school in the morning, **they must come to school with their correct school uniform to change back into after.**

There is information about vouchers which can be applied for through South Glos for support for uniform cost at the bottom of this newsletter.

Finally, please label all uniform and clothing items – this is the best way for lost items to be returned to the right pupil.

Thank you for your continued support.

Best wishes,
Mr Dan Ross – Headteacher
Facebook: @littlestokeprimary
www.littlestokeps.co.uk





Before the summer, we wrote to all parents and carers to inform you that Little Stoke Primary School is taking part in Wallace & Gromit's Unleashed 3 – a brilliant initiative supporting The Grand Appeal, the official charity for Bristol Children's Hospital.

Our Norbot "Flying High at Little Stoke Primary" has now been completed and will be part of the "The Greatest Dog Show on Earth 3" exhibition at Cribbs Causeway:

<https://www.grandappeal.org.uk/get-involved/fundraise/events/the-greatest-dog-show-on-earth-3/>



We are continuing to target £500 raised from LSPS for The Grand Appeal by the end of September. To help us reach this goal, we took part in the **Grand Read** over the summer holidays. We are now **over halfway** to our fundraising target. Thank you so much to everyone who has donated! If every child were to bring in £5, we would surpass our fundraising target – every little helps!

Children can collect cash donations, or sponsors can donate directly to our JustGiving page:

https://www.justgiving.com/page/little-stoke-primary-school-1?utm_medium=FA&utm_source=CL

Thank you so much for your support. We are proud to be part of such a creative and meaningful project, and we hope it inspires a love of reading – and giving – across our school community.



Online safety – social media and smart phones

Over the summer, some children may have received their first phone which may have smart capabilities. Whilst these devices can offer so much opportunity for fun and connection, the dangers of the direct access to children are well documented.

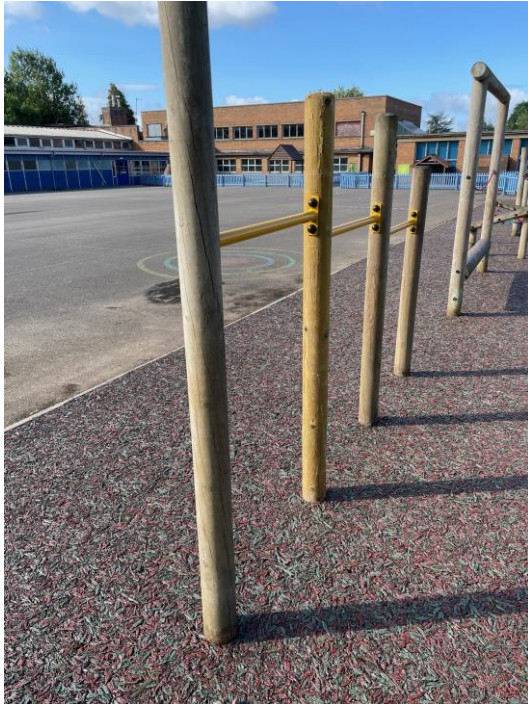
There have been reports recently in the South Gloucestershire of **adults infiltrating large children's social media groups** (on Apps such as WhatsApp) in order to request indecent images of children, whilst posing as children of the same age. Please ensure that if your child is allowed a smart phone, **you check it regularly and speak to your children about how to engage with social media appropriately** (note that the majority of social media apps have an age rating of 13+).

The NSPCC has some excellent advice for parents of children of varying ages:

<https://www.nspcc.org.uk/keeping-children-safe/online-safety/access-to-technology-for-different-ages/>

Building updates

As you may have seen from the school social media posts, over the summer a new all-weather surface under the play equipment, thanks to National Lottery funding. Acoustic panels were fitted in the dining hall to make lunchtimes calmer and more enjoyable. Early Years and KS1 corridors have been freshly painted to create a bright, welcoming feel.



Supporting Mental Health

You are invited to attend a workshop and coffee morning with Daria, our EMHP. This will take place on Tuesday 8th October at 9:15am. It is a very informal way of finding out more about how parents and carers can support the mental health of children at home.

Meet Your Educational Mental Health Practitioner (EMHP)...

Daria

Hi I'm Daria (she/her) from the Mental Health Support Team. I'll be working at your school each week, say hello next time you see me!



Starting from this term I will be working at Little Stoke Primary every Tuesday. I am going to be supporting students with anxiety, low mood, and other struggles with wellbeing. I will be using a type of therapy called low-intensity Cognitive Behavioural Therapy (CBT). The support I will be offering will include:

- Working with students on a 1-1 basis to show them ways that they can take care of their mental health.
- Working with parents to give them new ideas for supporting their child's mental health.
- Supporting a 'whole-school approach' to Mental Health, supporting student wellbeing by delivering group workshops, creating resources and lots more!

If you think your child could benefit from some support please speak to a member of staff in school, they will reach out to me and we can discuss how we can best help you. If we can help, we will arrange a 'meet and greet' session, where I can tell you a little bit more about the support I can offer.



Community Children's
Health Partnership



NHS
Avon and Wiltshire
Mental Health Partnership
NHS Trust



FOLS

All FOLS event information can be found on the “Little Stoke Primary Parents Info Group”.

There is also a WhatsApp Group, which you can join by scanning the QR code to the left.

Thank you to all the fund raising efforts to FOLS and everyone who supports the events. As school budgets are squeezed, the support the school receive from FOLS funds make a huge difference to the offer for the children.

Attendance

Good attendance is key to supporting children to do well at school. We have seen a positive start to term 1 for attendance, currently **above our school target of 96%**. Further to information about the changes to “Working together to improve school attendance” guidance, which was updated in August 2024, please see some reminders about attendance processes at Little Stoke:

- Pupils should arrive in school by 8.55am (at the latest) – the doors open at 8.45am.
- Medical appointments should be arranged outside of school hours, or in the school holidays where possible, and evidence needs to be provided if this is not the case.
- Holidays should be arranged during non-term time and any request for time off during term time be should put in writing via e-mail to admin@littlestokeps.co.uk.
- As stated in our attendance policy, if more than 5 days (10 sessions) are missed within a 7 week period, then it is likely a fixed penalty fine will be issued.
- Late after registration closes (9.15am) could also lead to a fixed penalty fine along with school attendance meeting. Again this is if there are more than 10 sessions missed within a 7 week period.
- Poor attendance, without medical proof, along with unauthorised absences could lead to school attendance meetings and potentially towards legal prosecution.
- It is **the parent's responsibility to call the office or e-mail** admin@littlestokeps.co.uk for every day of your child's absence.
-

For more information, please see our Attendance policy on our website <https://littlestokeps.co.uk/parentscarers/policies/>.



LITTLE STOKE PRIMARY SCHOOL

“a friendly and welcoming place to learn”

Ofsted, April 2024

EYFS SEPTEMBER 2026 STARTERS OPEN EVENTS:

Wednesday 1st October 2025, 9:30am

Thursday 2nd October 2025, 5:30pm

Tuesday 4th November 2025, 9:30am

Wednesday 5th November 2025, 5:30pm

Wednesday 7th January 2026, 9:30am

Thursday 8th January 2026, 5:30pm

Use the QR code below or contact the school on
01454 866522 to book a space.



Do you need help to buy school uniform?

You may be eligible for up to £50 for primary school uniform and £80 for secondary school uniform (maximum of three children per household).

YOU CAN APPLY IF YOU:

are struggling to pay bills and/or meet your monthly outgoings

live within South Gloucestershire

have no other means of support through family, friends or donations



If you're eligible, you will be reimbursed for purchases between **1 July to 15 September 2025**. You must provide receipts showing proof of purchase and your bank statement (unless you paid in cash). Payments will be made towards the cost of essential clothing for school use including PE kits, shoes and coats. You will not be reimbursed for stationery, bags, lunch boxes, or other non-clothing items.

You will receive a reimbursement in the form of a supermarket voucher.

To apply, visit your nearest One Stop Shop in Kingswood, Patchway or Yate. You will be asked to fill in a financial statement of your income and expenditure.

www.southglos.gov.uk/CostofLiving


South Gloucestershire
Council
Delivering with you

